
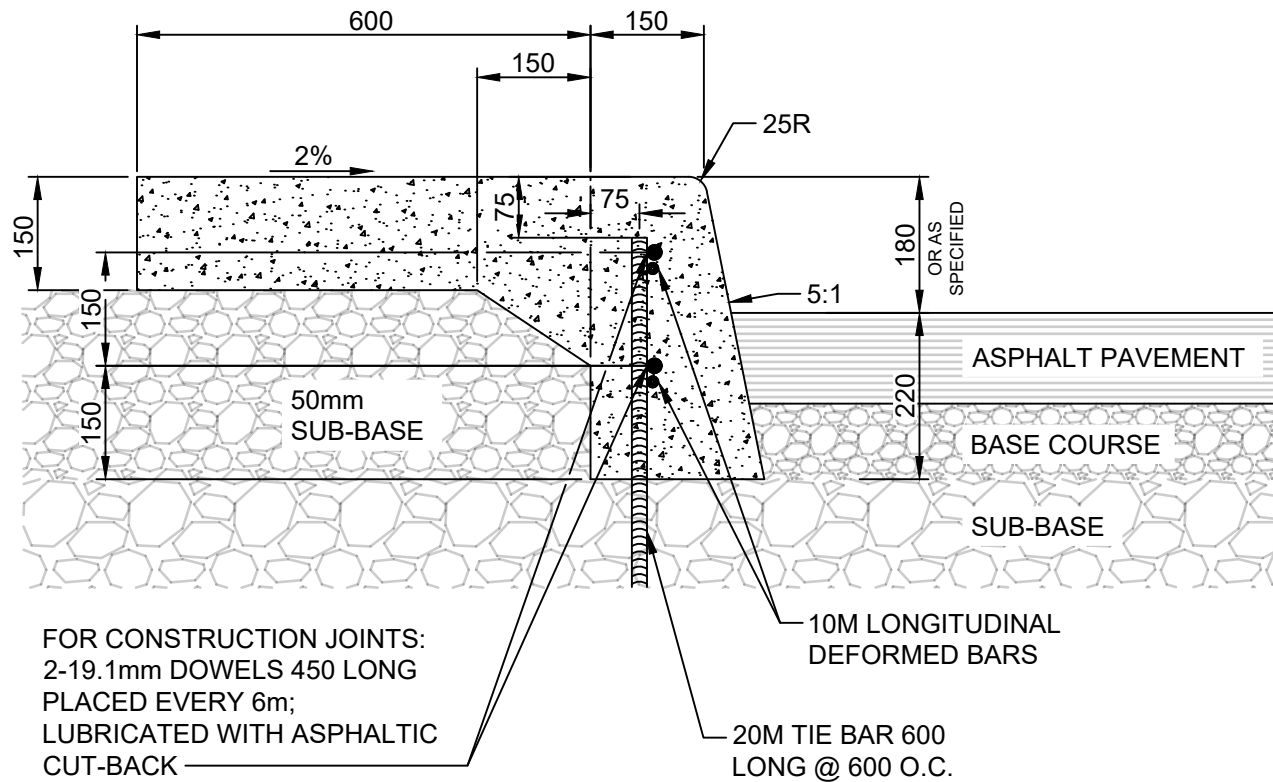


APPENDIX C

ASPHALT PAVEMENT CURB DETAILS

	THE CITY OF WINNIPEG PUBLIC WORKS DEPARTMENT		Revisions			
Reference Spec. No. CW 3325						
		No.	Date	Description		By
BARRIER CURB FOR ASPHALT PAVEMENT		Designed By: A.G.		Drawn By: R.B.		Scale : N.T.S
		Checked By: B.K.		Date: 2024-10-01		Drawing No.
		Approved: PAVEMENT MANAGEMENT BRANCH				SD-200A



NOTES:

1. TRANSVERSE SAW CUT EVERY 3m OR AT PAVEMENT JOINTS
2. TRANSVERSE SAW CUTS ARE TO BE A MAXIMUM DEPTH OF 25mm

DIMENSIONS IN MILLIMETRES

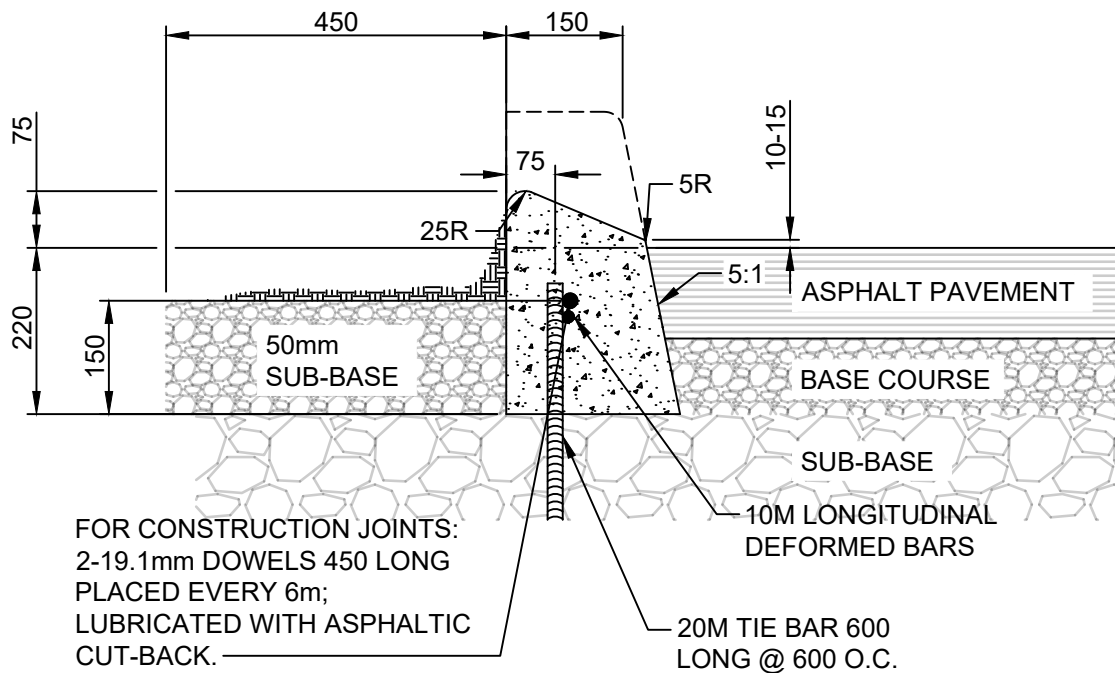


THE CITY OF WINNIPEG
PUBLIC WORKS DEPARTMENT

Reference Spec. No.
CW 3325

BARRIER CURB WITH INTEGRAL
SPLASH STRIP FOR ASPHALT
PAVEMENT

Revisions			
No.	Date	Description	By
Designed By: A.G.		Drawn By: R.B.	Scale : N.T.S
Checked By: B.K.		Date: 2024-10-01	
Approved: PAVEMENT MANAGEMENT BRANCH			SD-200B



NOTES:

1. TRANSVERSE SAW CUT EVERY 3m OR AT PAVEMENT JOINTS
2. TRANSVERSE SAW CUTS ARE TO BE A MAXIMUM DEPTH OF 25mm

DIMENSIONS IN MILLIMETRES



THE CITY OF WINNIPEG
PUBLIC WORKS DEPARTMENT

Reference Spec. No.
CW 3325

Revisions

No.	Date	Description	By

**75 mm LIP CURB FOR
ASPHALT PAVEMENT**

Designed By:
A.G.

Drawn By:
R.B.

Scale :
N.T.S

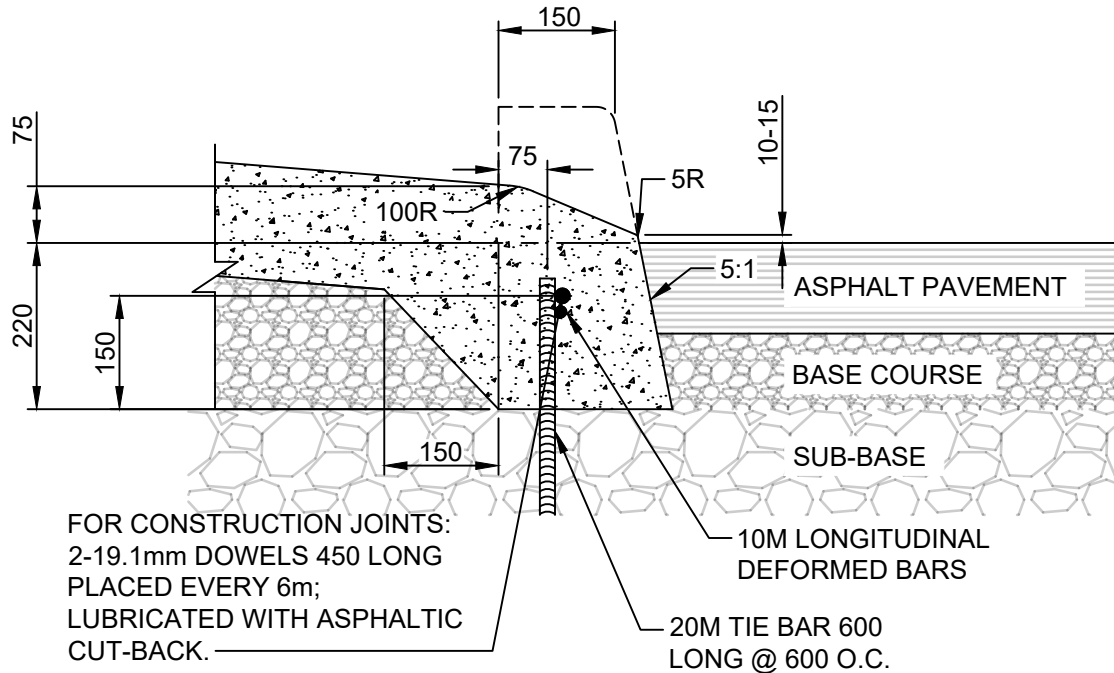
Checked By:
B.K.

Date:
2024-10-01

Drawing No.

Approved:
PAVEMENT MANAGEMENT BRANCH

SD-202B



NOTES:

1. TRANSVERSE SAW CUT EVERY 3m OR AT PAVEMENT JOINTS
2. TRANSVERSE SAW CUTS ARE TO BE A MAXIMUM DEPTH OF 25mm

DIMENSIONS IN MILLIMETRES



THE CITY OF WINNIPEG
PUBLIC WORKS DEPARTMENT

Reference Spec. No.
CW 3325

Revisions

No.	Date	Description	By

75 mm LIP CURB WITH
INTEGRAL APPROACH
FOR ASPHALT PAVEMENT

Designed By:
A.G.

Drawn By:
R.B.

Scale :
N.T.S

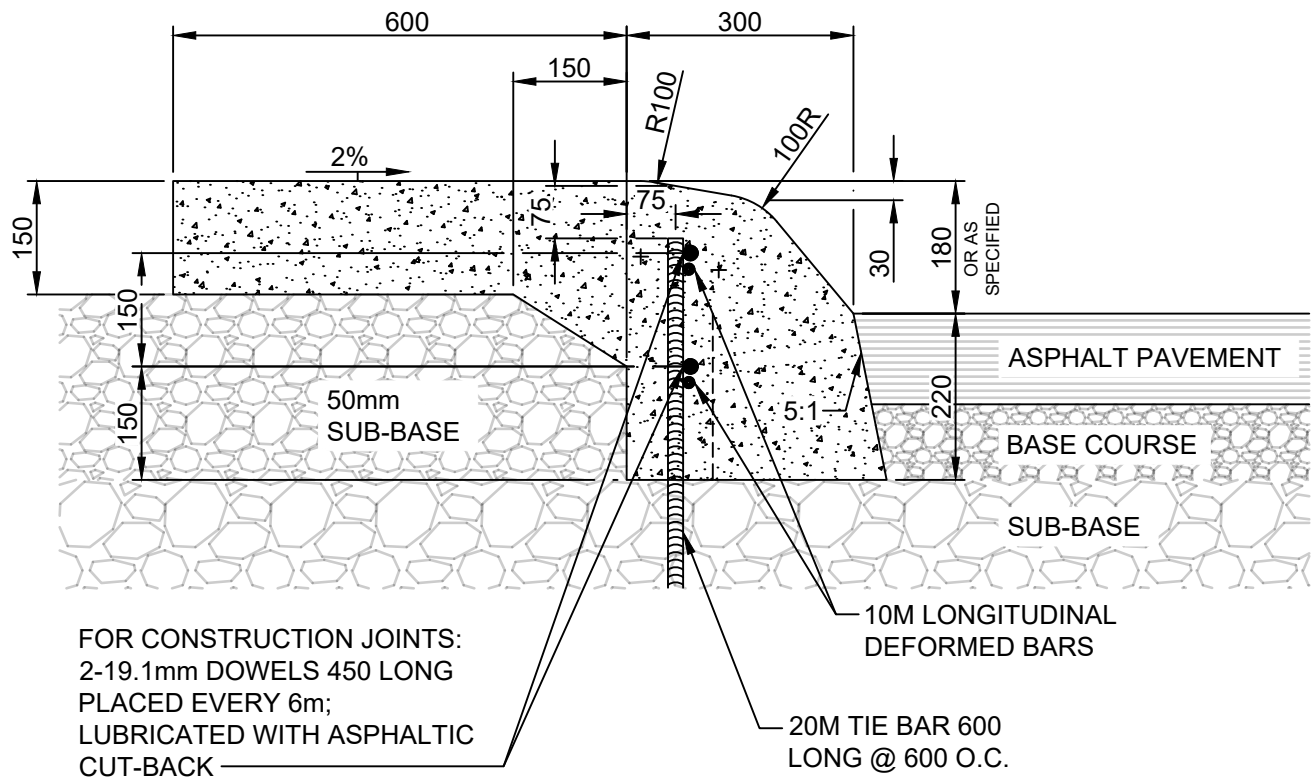
Checked By:
B.K.

Date:
2024-10-01

Drawing No.

Approved:
PAVEMENT MANAGEMENT BRANCH

SD-202C



NOTES:

1. TRANSVERSE SAW CUT EVERY 3m OR AT PAVEMENT JOINTS
2. TRANSVERSE SAW CUTS ARE TO BE A MAXIMUM DEPTH OF 25mm

DIMENSIONS IN MILLIMETRES




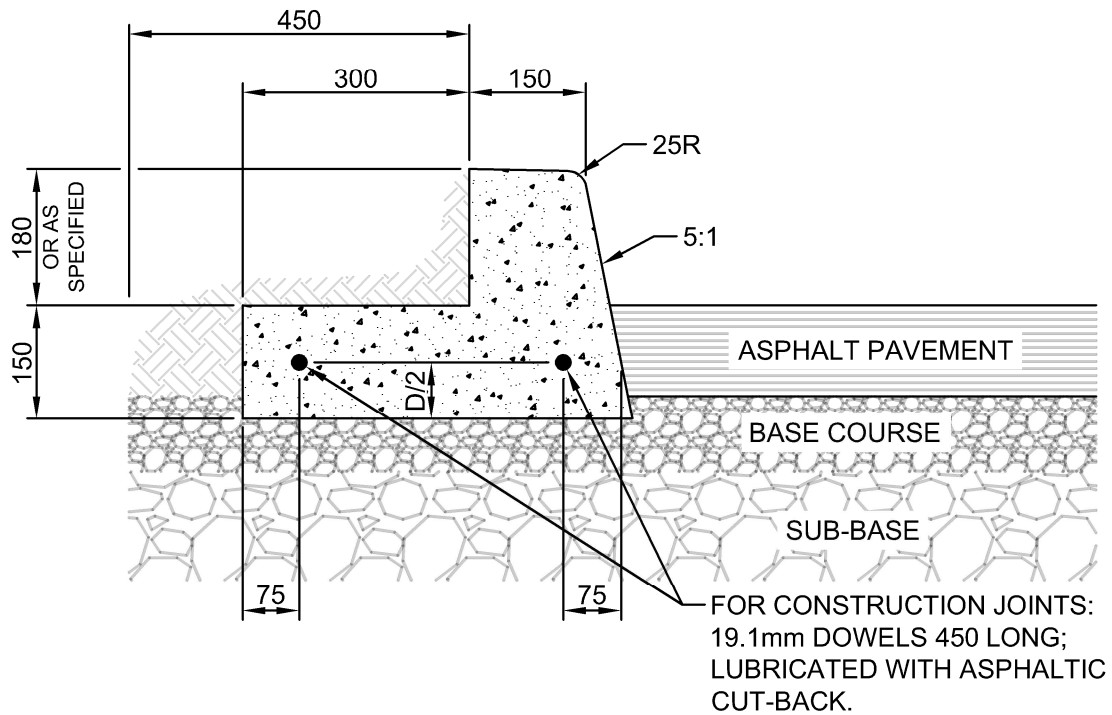
THE CITY OF WINNIPEG
PUBLIC WORKS DEPARTMENT

Reference Spec. No.
CW 3325

MODIFIED BARRIER CURB WITH
INTEGRAL SPLASH STRIP FOR
ASPHALT PAVEMENT

Revisions			
No.	Date	Description	By
Designed By: A.G.		Drawn By: R.B.	Scale : N.T.S
Checked By: B.K.		Date: 2024-10-01	
Approved: PAVEMENT MANAGEMENT BRANCH			SD-203D

<div></div> <div>THE CITY OF WINNIPEG</div> <div>PUBLIC WORKS DEPARTMENT</div>	Revisions			
	Reference Spec. No. CW 3325	No.	Date	Description
CURB RAMP FOR ASPHALT PAVEMENT	Designed By: A.G.		Drawn By: R.B.	Scale : N.T.S
	Checked By: B.K.		Date: 2024-03-19	Drawing No.
	Approved: PAVEMENT MANAGEMENT BRANCH			SD-229F



NOTES:

1. TRANSVERSE SAW CUT EVERY 3m OR AT PAVEMENT JOINTS
2. TRANSVERSE SAW CUTS ARE TO BE A MAXIMUM DEPTH OF 25mm

DIMENSIONS IN MILLIMETRES



THE CITY OF WINNIPEG
PUBLIC WORKS DEPARTMENT

Reference Spec. No.
CW 3325

**BARRIER CURB AND
REVERSED GUTTER FOR
ASPHALT PAVEMENT**

Revisions

No.	Date	Description	By

Designed By:
A.G.

Drawn By:
T.K.

Scale :
N.T.S

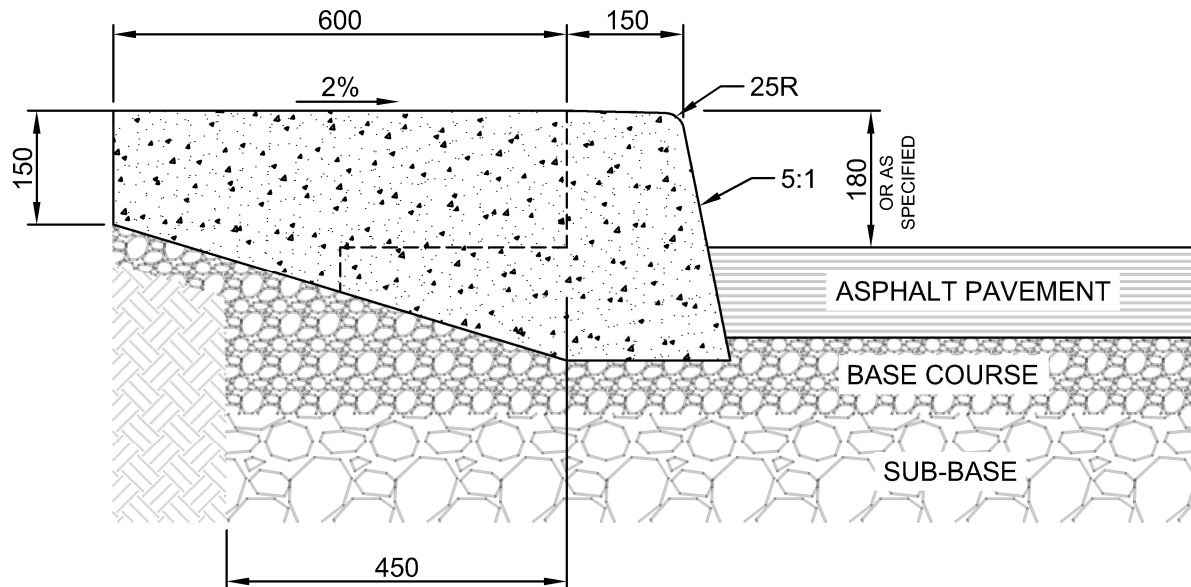
Checked By:
B.K.

Date:
2025-02-06

Drawing No.

Approved:
PAVEMENT MANAGEMENT BRANCH


SD-200AA

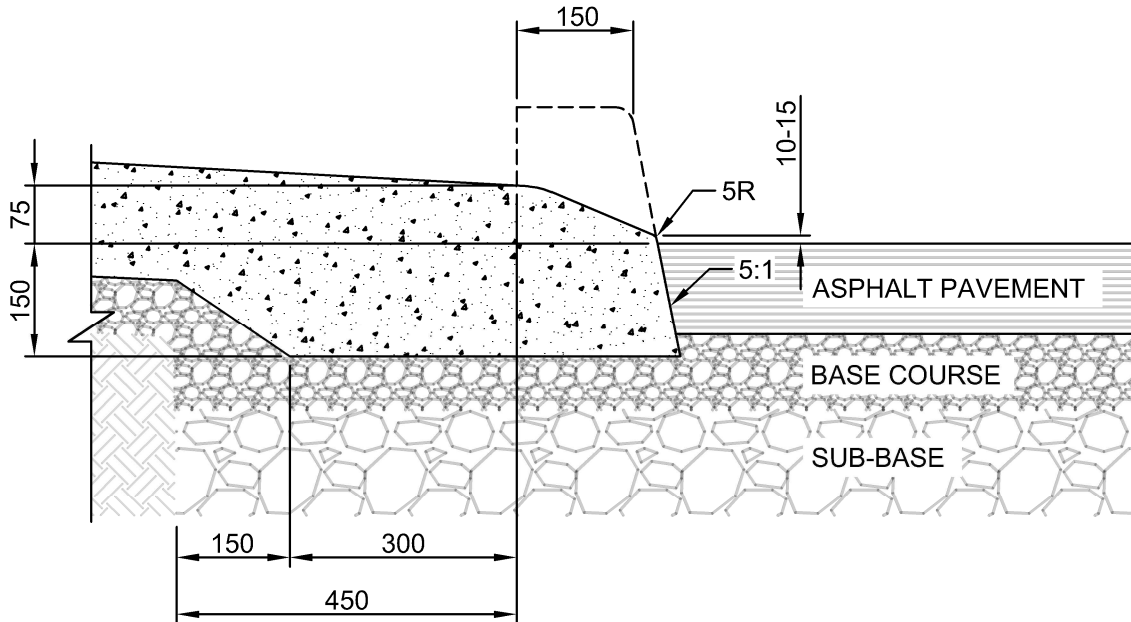


NOTES:

1. TRANSVERSE SAW CUT EVERY 3m OR AT PAVEMENT JOINTS
2. TRANSVERSE SAW CUTS ARE TO BE A MAXIMUM DEPTH OF 25mm
3. FOR CONSTRUCTION JOINTS INSTALL TWO 19.1mm DOWELS 450 LONG; LUBRICATED WITH ASPHALTIC CUT-BACK. REF SD-200AA.

DIMENSIONS IN MILLIMETRES


 <p>THE CITY OF WINNIPEG PUBLIC WORKS DEPARTMENT</p>	Revisions			
Reference Spec. No. CW 3325				
BARRIER CURB WITH INTEGRAL SPLASH STRIP FOR ASPHALT PAVEMENT	No.	Date	Description	By
	Designed By:	Drawn By:	Scale :	
	A.G.	T.K.	N.T.S	
	Checked By:	Date:	Drawing No.	
	B.K.	2025-01-31	SD-200BA	
	Approved:			
	PAVEMENT MANAGEMENT BRANCH			

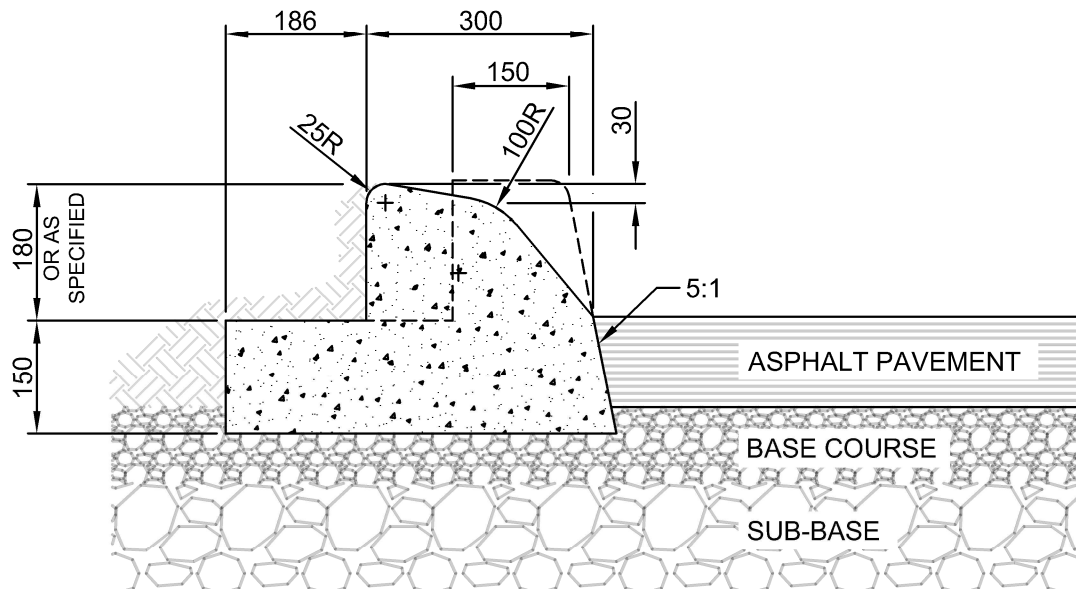


NOTES:

1. TRANSVERSE SAW CUT EVERY 3m OR AT PAVEMENT JOINTS
2. TRANSVERSE SAW CUTS ARE TO BE A MAXIMUM DEPTH OF 25mm
3. FOR CONSTRUCTION JOINTS INSTALL TWO 19.1mm DOWELS 450 LONG; LUBRICATED WITH ASPHALTIC CUT-BACK. REF SD-200AA.

DIMENSIONS IN MILLIMETRES

 THE CITY OF WINNIPEG PUBLIC WORKS DEPARTMENT	Revisions			
Reference Spec. No. CW 3325				
75 mm LIP CURB WITH INTEGRAL APPROACH FOR ASPHALT PAVEMENT	No.	Date	Description	By
	Designed By:	Drawn By:	Scale :	
	A.G.	T.K.	N.T.S	
	Checked By:	Date:	Drawing No.	
	B.K.	2025-01-31	SD-202CA	
	Approved:			
	PAVEMENT MANAGEMENT BRANCH			



NOTES:

1. TRANSVERSE SAW CUT EVERY 3m OR AT PAVEMENT JOINTS
2. TRANSVERSE SAW CUTS ARE TO BE A MAXIMUM DEPTH OF 25mm
3. FOR CONSTRUCTION JOINTS INSTALL TWO 19.1mm DOWELS 450 LONG; LUBRICATED WITH ASPHALTIC CUT-BACK. REF SD-200AA.

DIMENSIONS IN MILLIMETRES



THE CITY OF WINNIPEG
PUBLIC WORKS DEPARTMENT

Reference Spec. No.
CW 3325

**MODIFIED BARRIER CURB
WITH REVERSED GUTTER
FOR ASPHALT PAVEMENT**

Revisions

No.	Date	Description	By

Designed By:
A.G.

Drawn By:
T.K.

Scale :
N.T.S

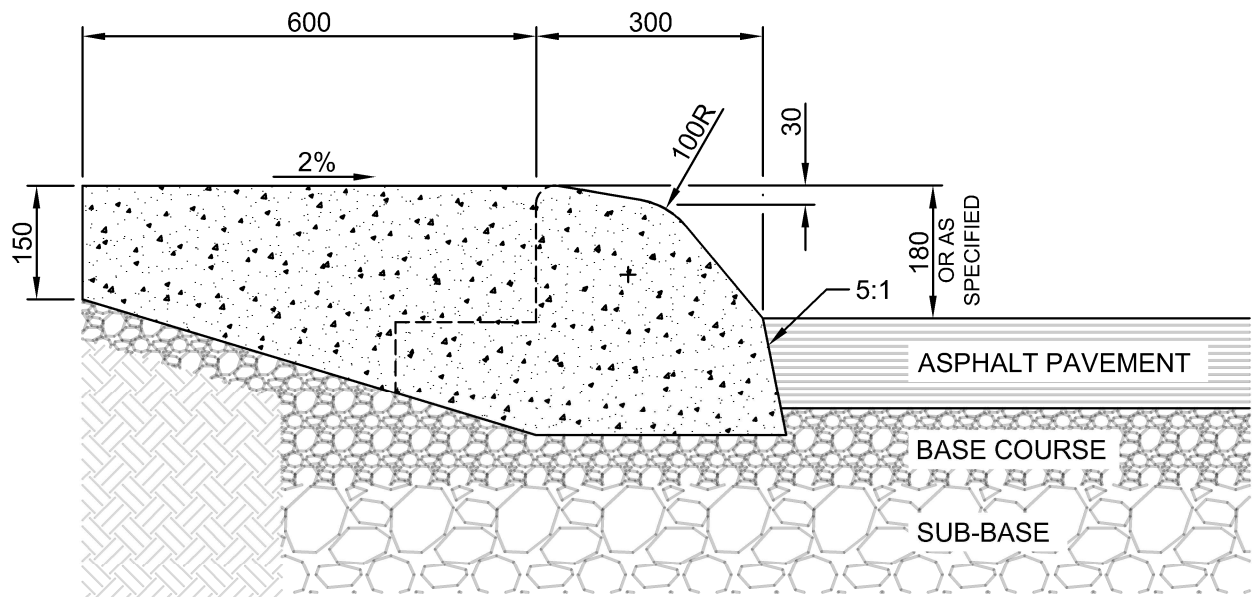
Checked By:
B.K.

Date:
2025-01-31

Drawing No.

Approved:
PAVEMENT MANAGEMENT BRANCH


SD-203CA



NOTES:

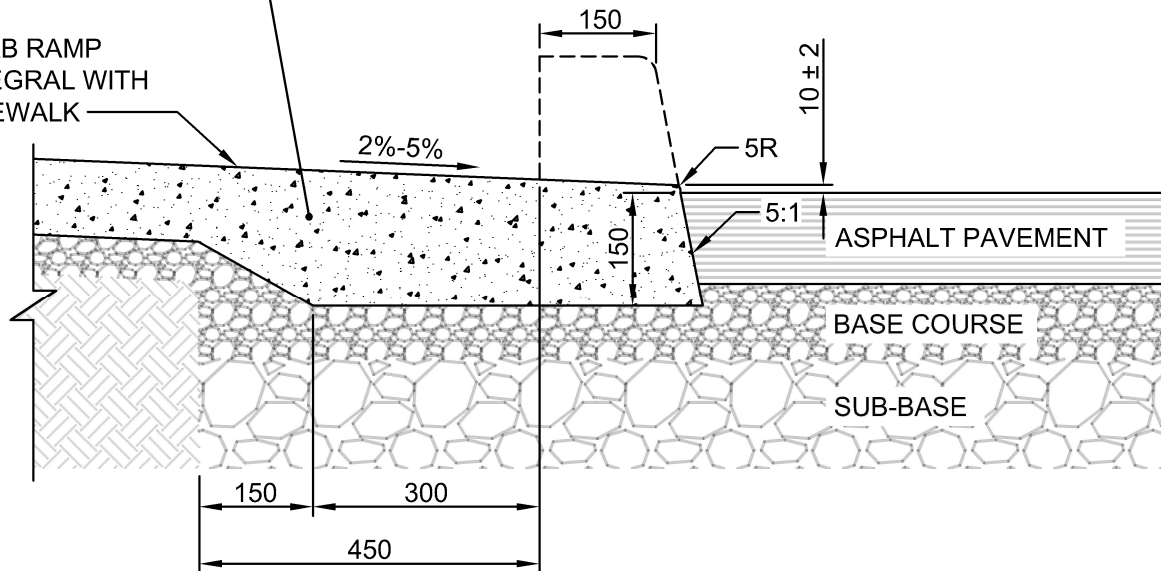
1. TRANSVERSE SAW CUT EVERY 3m OR AT PAVEMENT JOINTS
2. TRANSVERSE SAW CUTS ARE TO BE A MAXIMUM DEPTH OF 25mm
3. FOR CONSTRUCTION JOINTS INSTALL TWO 19.1mm DOWELS 450 LONG; LUBRICATED WITH ASPHALTIC CUT-BACK. REF SD-200AA.

DIMENSIONS IN MILLIMETRES

 THE CITY OF WINNIPEG PUBLIC WORKS DEPARTMENT	Revisions			
Reference Spec. No. CW 3325				
MODIFIED BARRIER CURB WITH INTEGRAL SPLASH STRIP FOR ASPHALT PAVEMENT	No.	Date	Description	By
	Designed By:	A.G.	Drawn By:	T.K.
	Checked By:	B.K.	Date:	2025-01-31
	Approved:	PAVEMENT MANAGEMENT BRANCH		
			Scale :	N.T.S
			Drawing No.	SD-203DA

EXISTING OR
PROPOSED SIDEWALK

CURB RAMP
INTEGRAL WITH
SIDEWALK



NOTES:

1. TRANSVERSE SAW CUT EVERY 3m OR AT PAVEMENT JOINTS
2. TRANSVERSE SAW CUTS ARE TO BE A MAXIMUM DEPTH OF 25mm

DIMENSIONS IN MILLIMETRES



THE CITY OF WINNIPEG
PUBLIC WORKS DEPARTMENT

Reference Spec. No.
CW 3325

CURB RAMP FOR
ASPHALT PAVEMENT

Revisions

No.	Date	Description	By
-----	------	-------------	----

Designed By: A.G.	Drawn By: T.K.	Scale : N.T.S
Checked By: B.K.	Date: 2025-01-31	Drawing No. SD-229FA
Approved: PAVEMENT MANAGEMENT BRANCH		